

- 1 Dholera International Airport
- 2 Shree Kashthbhanjandev Hanumanji Temple, Kamiyala
- 3 Gallop's Food Court
- 4 Lothal National Maritime Heritage Complex
- 5 Lothal Archaeological Site (Harappa Port Town)
- 6 ABCD Building
- 7 Blackbuck National Park (Valavadar)



SITE : ANANTA VILASA,
Village Fedra,
Fedra/Pipli State Highway,
Dholera.

CONTACT :
+91 90993 90003
+91 90993 70003

ARCHITECT:
AR.DEVANSH PATEL
+91 8866 410240

DISCLAIMER

• Purchaser shall bear all charges of stamp duty & registration, advocate fees of legal document, society formation charges, Government tax, GST or any other applicable Govt. & local authority taxes. • The Developer reserves the right to change or revise or make any modifications, additions, omissions or alterations in the plan, layout and elevation of the project as a whole or any part thereof or any details therein at their sole discretion without any prior notice. Such Changes would be binding to all members. • The developer reserves all rights to make any amendments in construction as necessary. • Plans of various floors indicated are graphic representations only, kindly do not scale. • The Brochure is intended only to convey the essential design and technical features of the scheme and does not form part of any legal document. • Subject to Ahmedabad Jurisdiction.

ANANTA VILASA

RESIDENCIAL OPEN PLOTS & VILLA





GRAND WELCOME TO
REFINED LIVING

Step into a space where architecture meets elegance. A thoughtfully designed entrance that sets the tone for a lifestyle defined by comfort, privacy, and modern sophistication.

LAYOUT PLAN

AREA TABLE

PLOT NO.	SQ.YARD S.B.A	PLOT NO.	SQ.YARD S.B.A	PLOT NO.	SQ.YARD S.B.A
01	311.91	53 to 61	294.73	101	357.88
02	268.09	62	381.18	102	309.24
03	270.69	63	342.49	103	266.79
04	277.55	64 to 70	294.73	104	267.38
05 to 07	264.82	71	372.47	105	267.75
08	381.13	72	476.22	106	267.64
09	330.38	73 to 79	263.3	107	269.17
10 to 23	294.73	80	395.9	108 & 109	266.73
24	505.66	81	385.14	110	265.67
25	396.97	82 to 94	263.3	111	266.14
26 to 38	294.73	95	497.69	112	265.77
39	339.58	96	462.14	113	265.67
40	471.96	97	371.76	114	265.39
41 to 50	294.73	98	417.79	115	310.59
51	552.72	99	298.36	TOTAL AREA	35,213
52	517.59	100	328.13		





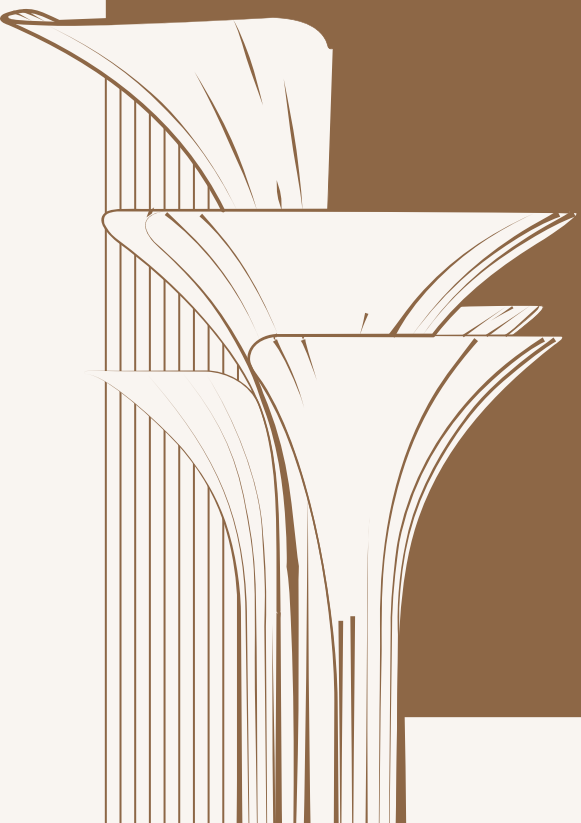
A COMMUNITY
PLANNED WITH
PURPOSE





PLAYFUL AMENITIES HAPPY MOMENTS

A lively collection of amenities crafted to inspire imagination and active play-making every day brighter for your little ones.



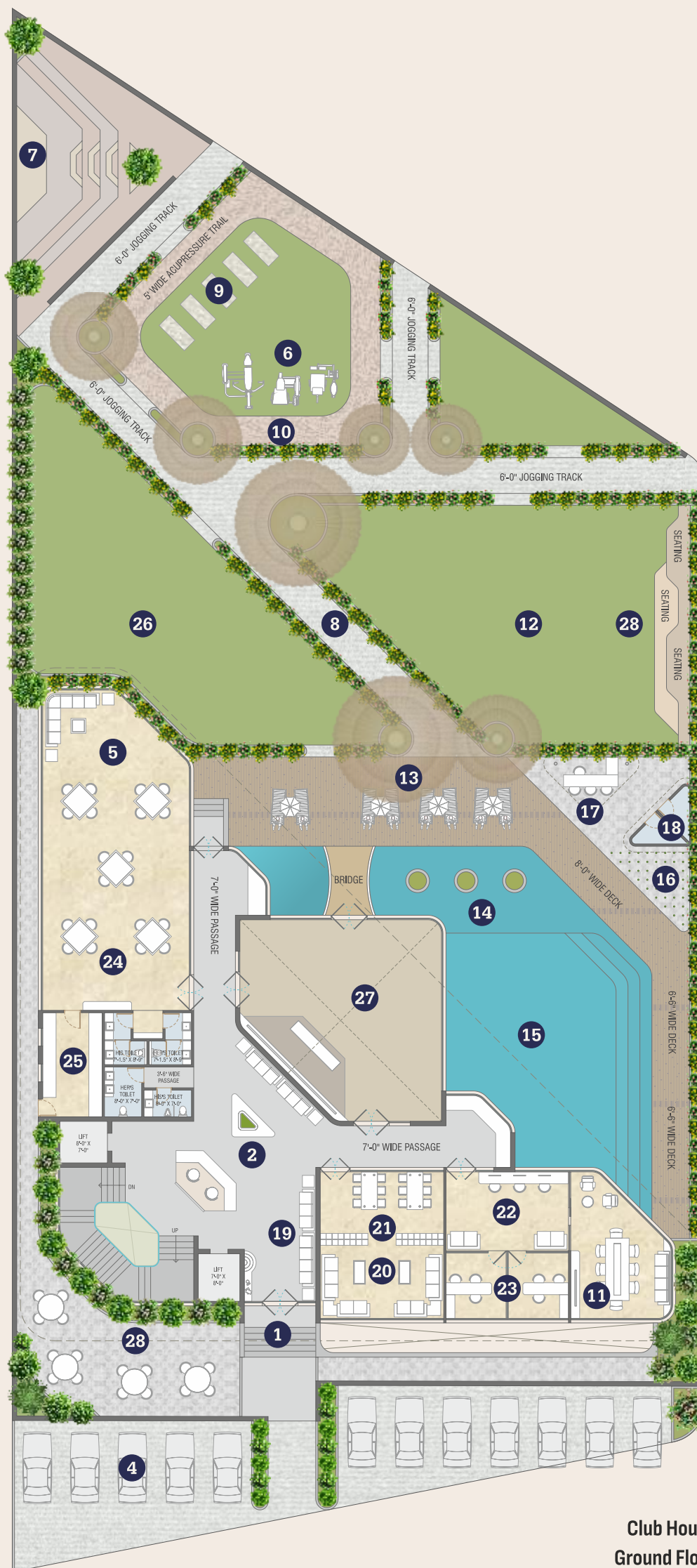
CLUB HOUSE AMENITIES

- 1 ENTRANCE GATE
- 2 RECEPTION
- 3 GUEST ROOM
- 4 VISITORS PARKING
- 5 MULTIPURPOSE HALL
- 6 OUTDOOR GYM
- 7 AMPHI THEATER
- 8 JOGGING / CYCLING TRACK
- 9 YOGA/ MEDITATION AREA
- 10 ACUPRESSURE TRAIL
- 11 CONFERENCE ROOM
- 12 MULTIPURPOSE GARDEN
- 13 POOLSIDE LOUNGE/ DECK
- 14 KIDS POOL AREA
- 15 SWIMMING POOL
- 16 RAIN SHOWER
- 17 CAFE CORNER
- 18 CHANGING/SHOWER ROOM
- 19 WAITING AREA
- 20 KNOWLEDGE CORNER
- 21 LIBRARY AREA
- 22 CO-WORKING SPACE
- 23 MEETING ROOM
- 24 BANQUET HALL
- 25 KITCHEN

CLUB HOUSE

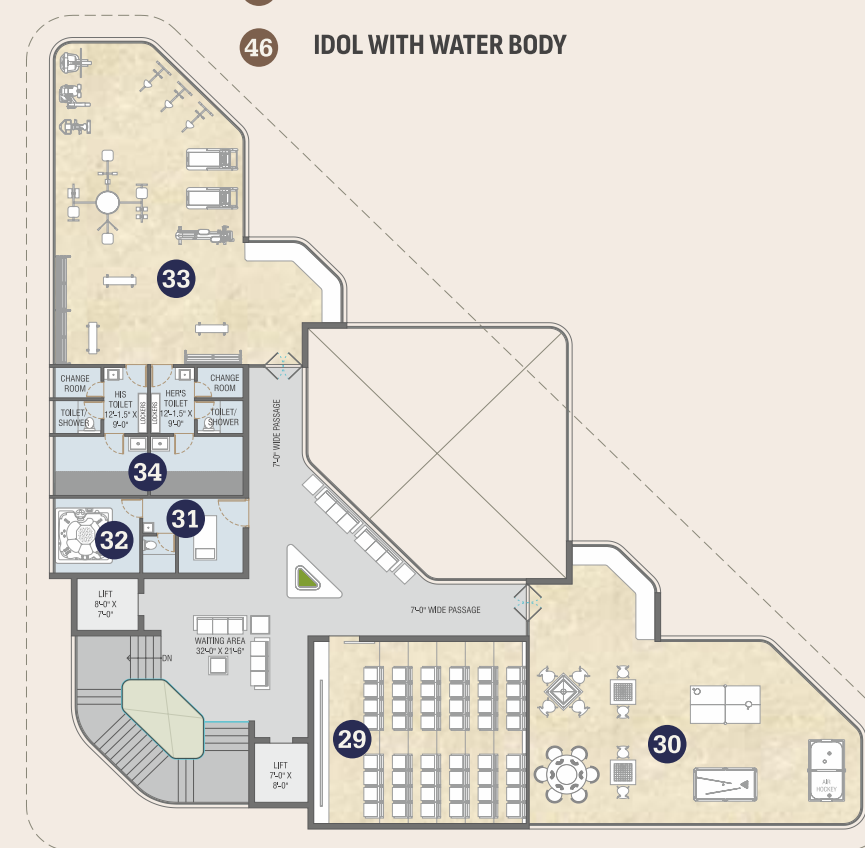


Club House Basement Floor



Club House Ground Floor

- 26 EVENT LAWN
- 27 DISCO LOUNGE
- 28 OUTDOOR SITTING
- 29 THEATER
- 30 INDOOR GAMES
- 31 SPA
- 32 JACUZZI
- 33 GYM AREA
- 34 STEAM / SAUNA
- VALUABLE AMENITIES
- 36 KIDS PLAY AREA
- 37 TENNIS COURT
- 38 BATMINTON
- 39 BASKET BALL
- 40 BOX CRICKET
- 41 SENIOR CITIZEN GARDEN
- 42 TERRACE SOLAR PANELS
- 43 GRAND ENTRANCE GATE
- 44 SECURITY CABIN
- 45 DROP-OFF POINT
- 46 IDOL WITH WATER BODY



Club House First Floor



THE CLUBHOUSE THAT DEFINES LUXURY LIVING

A stunning blend of architecture and leisure, this clubhouse opens to serene waters and curated landscapes - creating a space where elegance meets everyday indulgence.





AN ICONIC CLUBHOUSE OF
**MODERN
ELEGANCE**

A striking clubhouse that reflects sophistication through its bold architecture and refined details-setting the stage for an elevated lifestyle experience.



A VIEW THAT
REDEFINES
RELAXATION

Surrounded by tranquil waters and curated interiors, every moment here feels elevated. A perfect setting where design, light, and leisure come together effortlessly.



ADMIRE YOUR DESIGNER HOMES

Prepare to be wowed by your designer dream home, where every corner whispers elegance and invites you to revel in its beauty. Experience the richness of thoughtfully crafted textured walls that add depth, character, and warmth to every space. Subtle details and refined elements come together to create a timeless narrative, transforming your home into a truly sophisticated masterpiece.

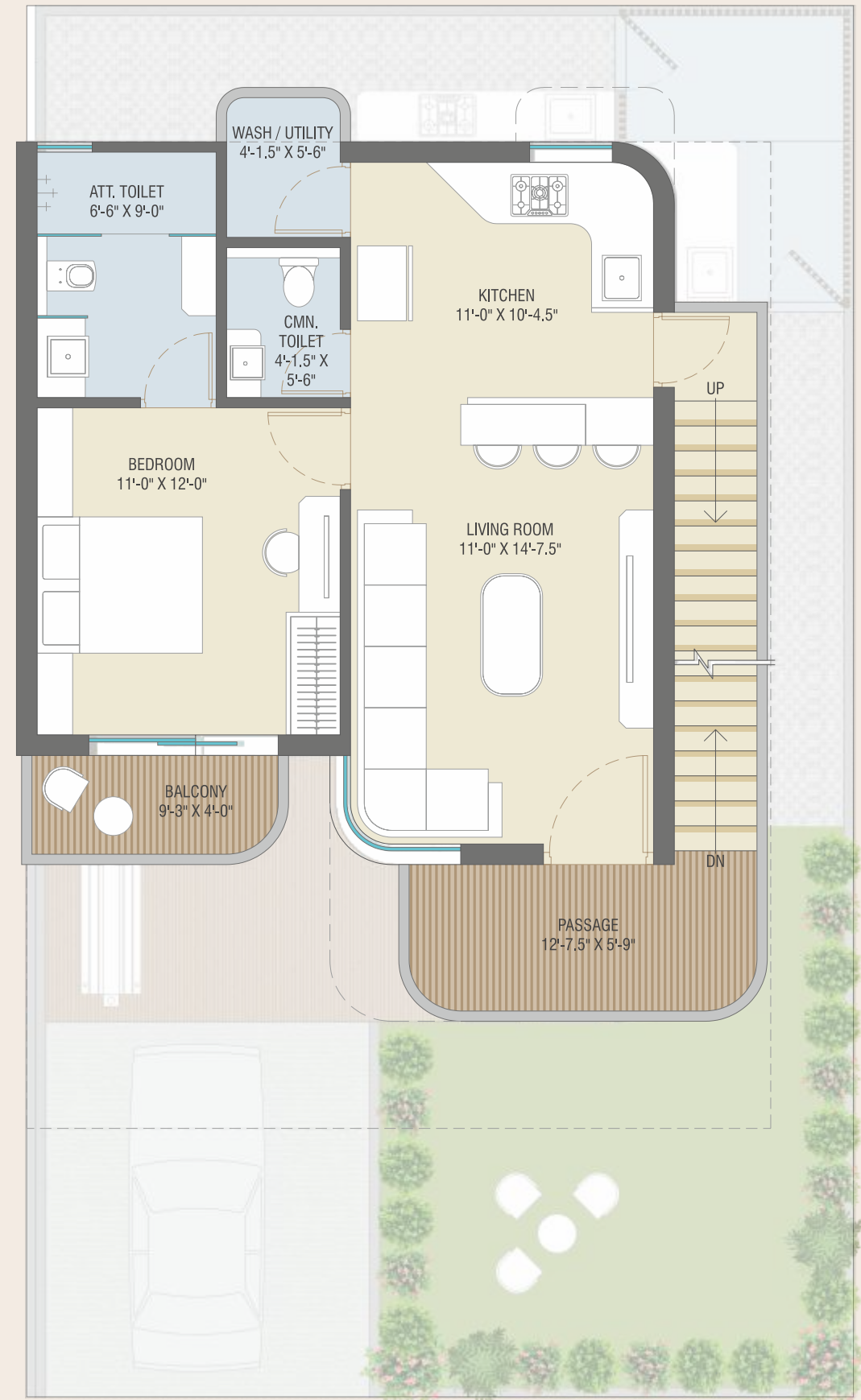
Built up Area: 620.05 SQ.FT



TYPE
A

Ground Floor

Built up Area: 757.83 SQ.FT



First Floor

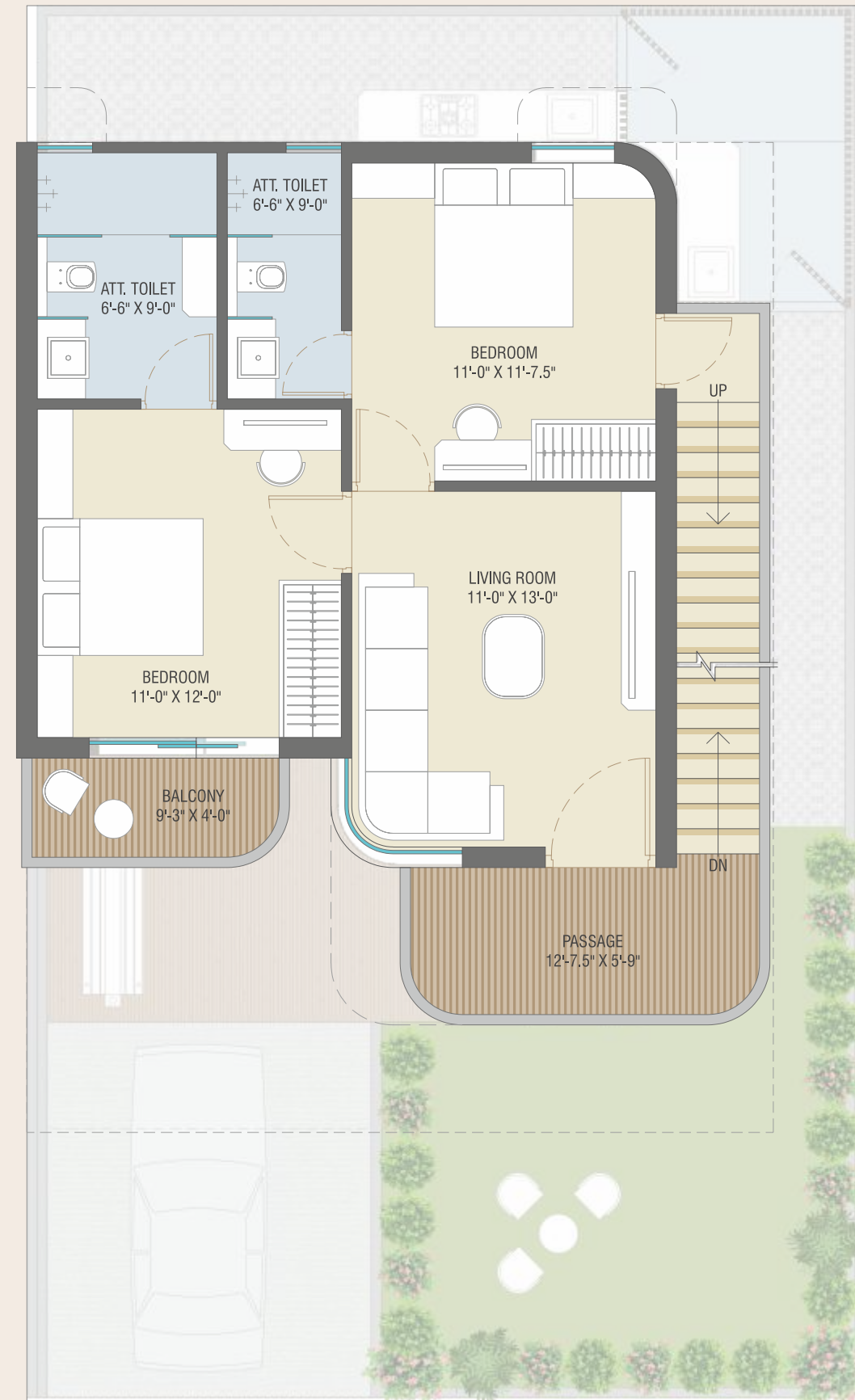
Built up Area: 620.05 SQ.FT



TYPE
B

Ground Floor

Built up Area: 757.83 SQ.FT



First Floor



INFRASTRUCTURE


40 FT & 25 FT
WIDE INTERNAL
ROADS


GATED
TOWNSHIP


WALKING
TRACK


KIDS PLAY
AREA


COMPOUND
WALL


24X7 WATER
SUPPLY


CCTV
SECURITY

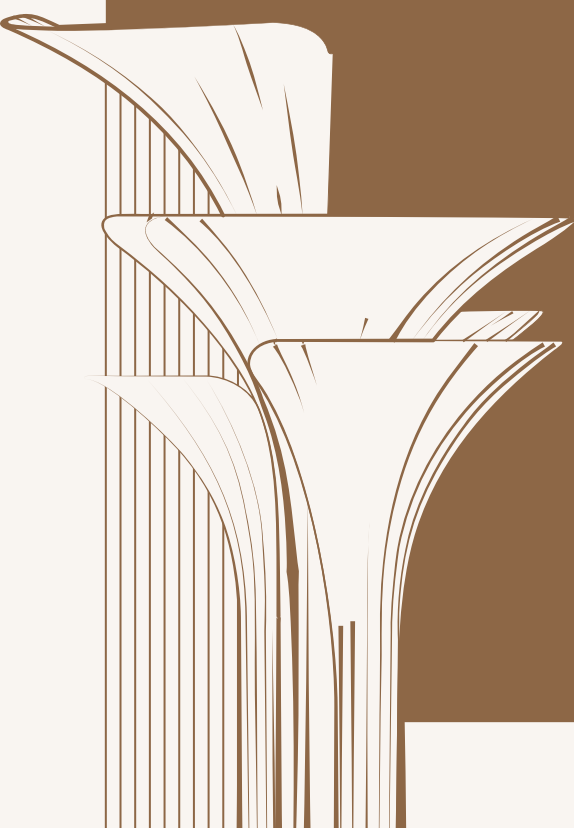

LANDSCAPING
GARDEN


SECURITY
CABIN


24X7
ELECTRICITY SUPPLY

MARVEL AT METICULOUS PLANNING

Experience a well-orchestrated campus where intelligent planning meets premium infrastructure—creating a lifestyle defined by comfort and understated luxury.





SPECIFICATION



Structure:

- All RCC & Masonry work as per structural Engineer's design
- Elevation work as per Architect Design.
- Trimix Internal Roads with Designer Street Lights, Decorative Paving



Doors & Windows:

- Main & Internal doors with stone frame finished with venner and polish
- Aluminium sliding windows



Flooring:

- Durable & scratch resistance tile flooring
- China mosaic with brick bat water proofing on terrace



Kitchen:

- Granite Platform with S.S Sink & designer tiles



Bathrooms:

- Designer anti-skid tiles fitting up to lintel levels
- Ultra-modern sanitary fixtures



Electrification:

- Concealed wiring of standard quality with TV, Fridge & AC points in all bedrooms



Paint & Finish:

- External walls finished with weather proof paint with rustic texture
- Internal walls with putty & primer



Plumbing:

- Concealed internal plumbing with hot water points





BANQUET HALL



THEATRE



GYMNASIUM



DISCO HALL



GAME ROOM



LIBRARY AREA

